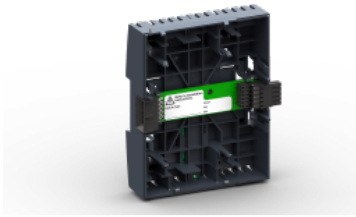


Product data sheet

Specifications



Terminal base, SpaceLogic, required for AS-P

SXWTBASW110002

Main

Device short name	TB-ASP-W1
Width	90 mm
Product or component type	Terminal base
Electrical connection	Connector
Fixing mode	By claws
Height	114 mm
Range	EcoStruxure Building Operation

Complementary

Product brand	Schneider Electric
Number of slots	1
Quantity per set	1
Range compatibility	EcoStruxure Building Operation AS-P controller EcoStruxure Building Operation AS-P-SMK controller

Packing Units

Unit Type of Package 1	PCE
Number of Units in Package 1	1
Package 1 Height	4.2 cm
Package 1 Width	10.5 cm
Package 1 Length	11.8 cm
Package 1 Weight	100.4 g

Offer Sustainability

Sustainable offer status	Green Premium product
REACH Regulation	REACH Declaration
EU RoHS Directive	Compliant EU RoHS Declaration
Mercury free	Yes
China RoHS Regulation	China RoHS declaration
RoHS exemption information	Yes

Environmental Disclosure	Product Environmental Profile
Circularity Profile	End of Life Information
WEEE	The product must be disposed on European Union markets following specific waste collection and never end up in rubbish bins
PVC free	Yes
Halogen content performance	Halogen free plastic parts & cables product
California proposition 65	WARNING: This product can expose you to chemicals including: Lead, which is known to the State of California to cause cancer and birth defects or other reproductive harm. For more information go to www.P65Warnings.ca.gov

Recommended replacement(s)